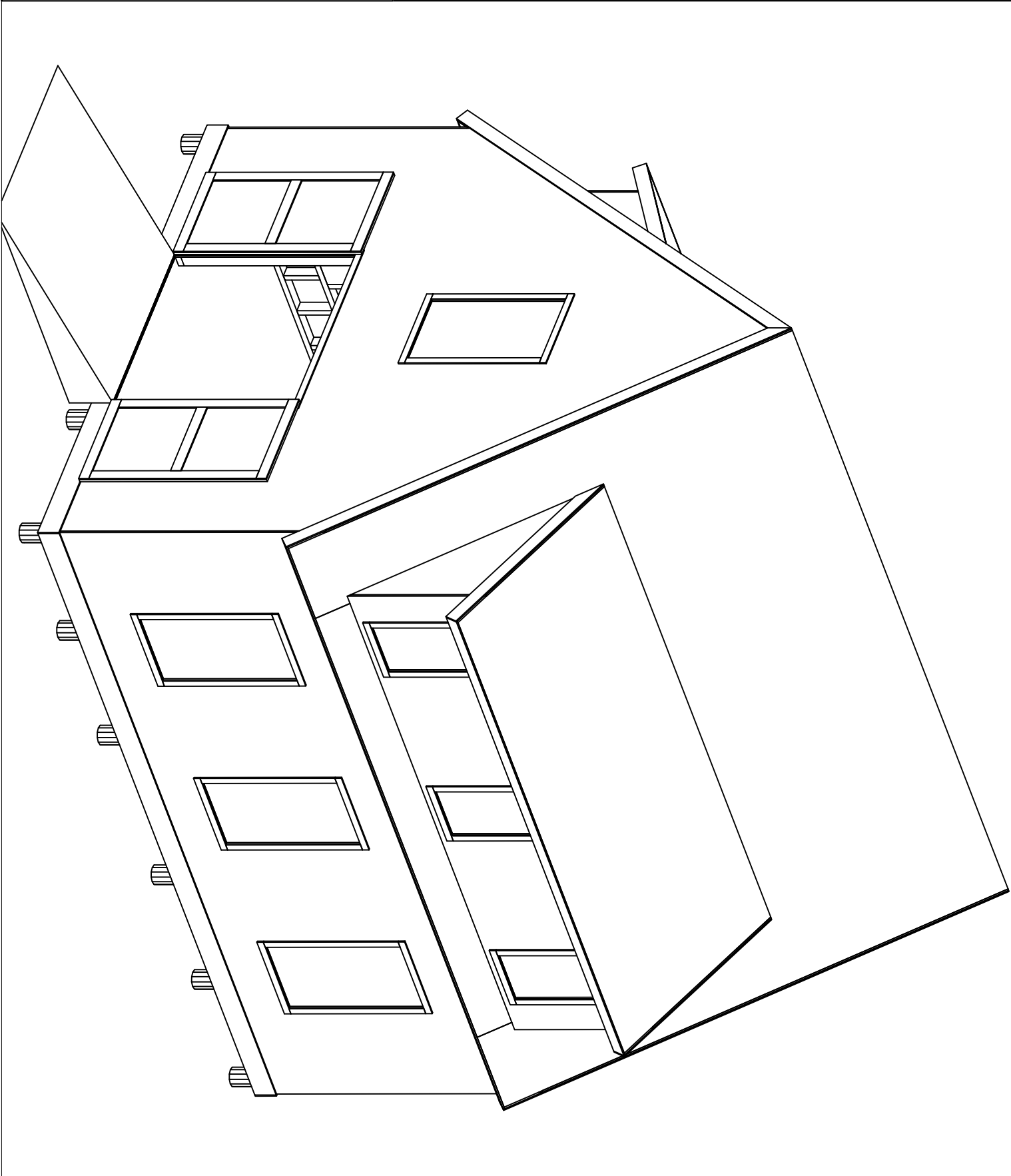




Company

STEVE THOMAS HYBRID TIMBER FRAME BUILDING AXONOMETRIC

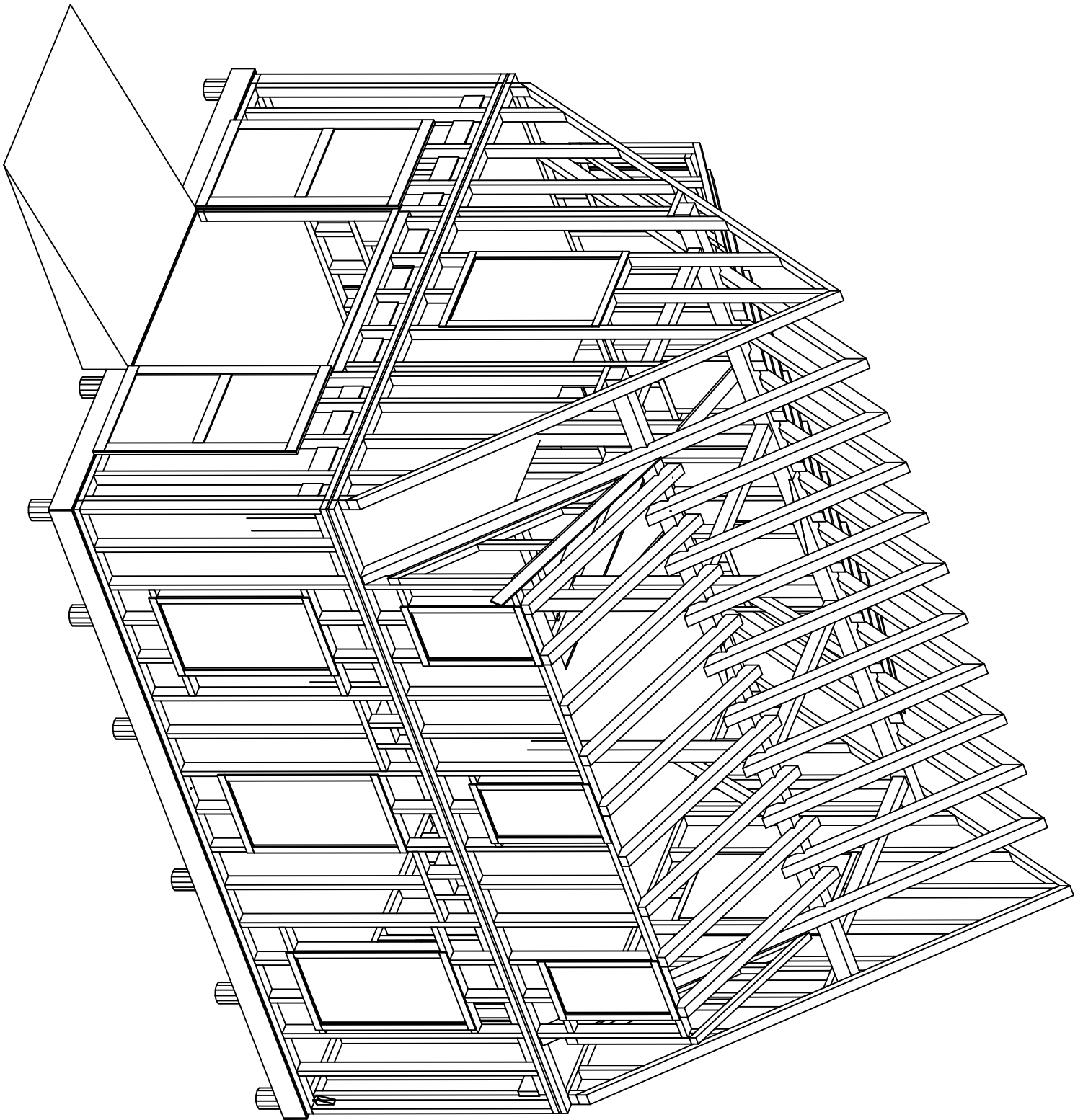
Maine Barn Co ~ Connolly & Co. Timber Frames
www.mainebarncompany.com ~ www.connollytimberframes.com
207-882-4224 ~ 10 Atlantic Hwy Edgecomb ME 04556





STEVE THOMAS HYBRID TIMBER FRAME SHELL AXONOMETRIC

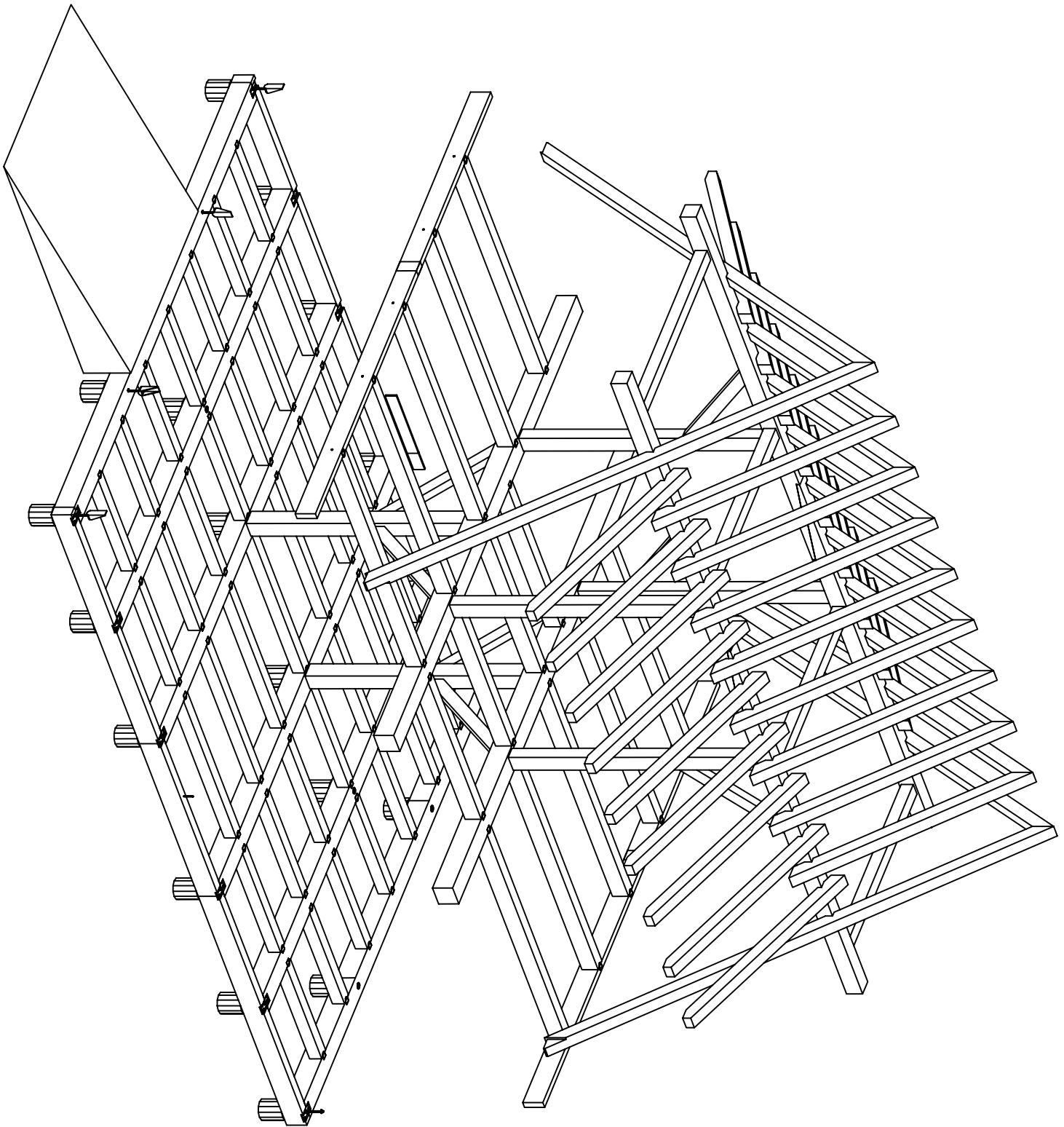
Maine Barn Co ~ Connolly & Co. Timber Frames
www.mainebarncompany.com ~ www.connollytimberframes.com
207-882-4224 ~ 10 Atlantic Hwy Edgecomb ME 04556





STEVE THOMAS HYBRID TIMBER FRAME TIMBER FRAME AXONOMETRIC

Maine Barn Co ~ Connolly & Co. Timber Frames
www.mainebarncompany.com ~ www.connollytimberframes.com
207-882-4224 ~ 10 Atlantic Hwy Edgecomb ME 04556





STEVE THOMAS HYBRID TIMBER FRAME
PARTIAL TIMBER FRAME AXONOMETRIC

Maine Barn Co ~ Connolly & Co. Timber Frames
www.mainebarncompany.com ~ www.connollytimberframes.com
207-882-4224 ~ 10 Atlantic Hwy Edgecomb ME 04556

